

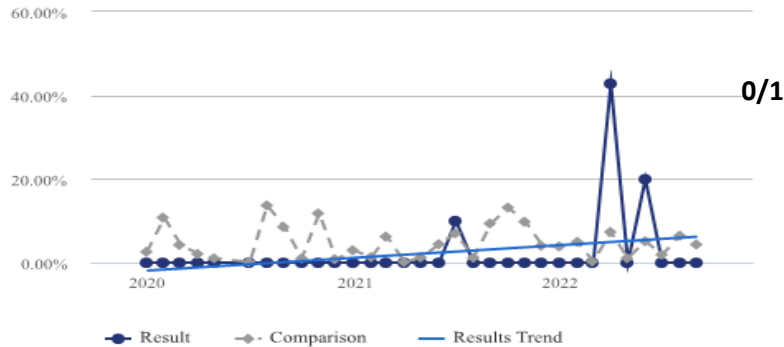
6.8 MEDICARE MORTALITIES



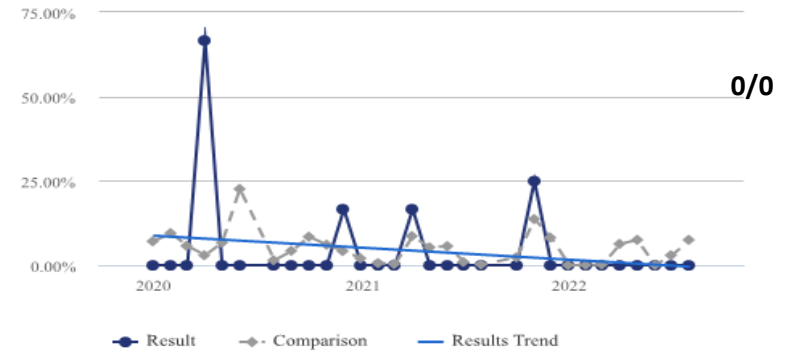
AMI Medicare Mortalities 4th Q22

Hospital Compare CMS benchmark 13.6%

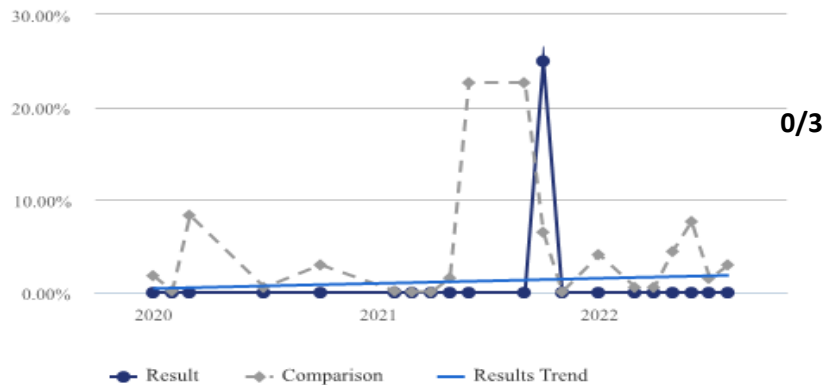
Mortality Rate (with Exclusions) - System-All Physicians
BHMC



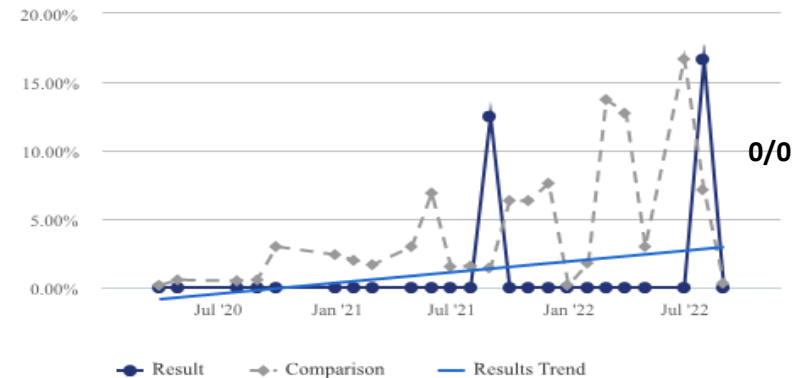
Mortality Rate (with Exclusions) - System-All Physicians
BHN



Mortality Rate (with Exclusions) - System-All Physicians
BHIP



Mortality Rate (with Exclusions) - System-All Physicians
BHCS

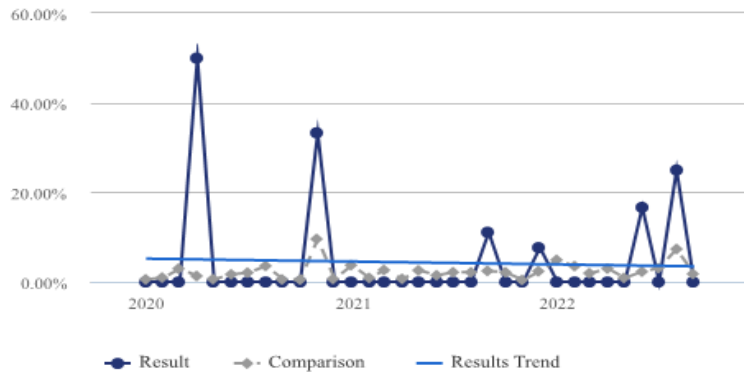


HF Medicare Mortalities 4th Q22

Hospital Compare CMS benchmark 12.0%

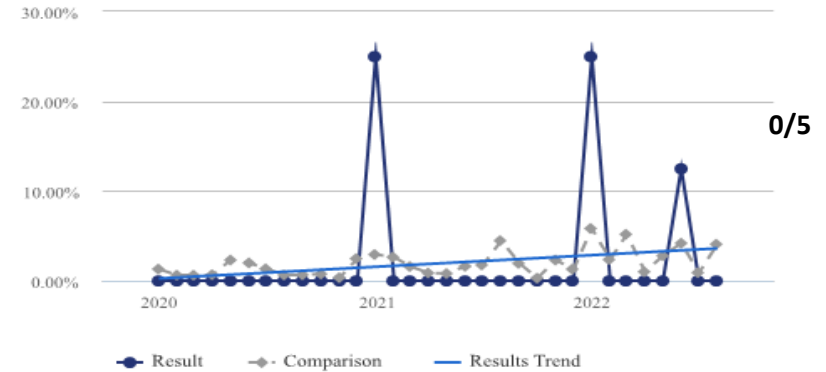
Mortality Rate (with Exclusions) - System-All Physicians

BHMC



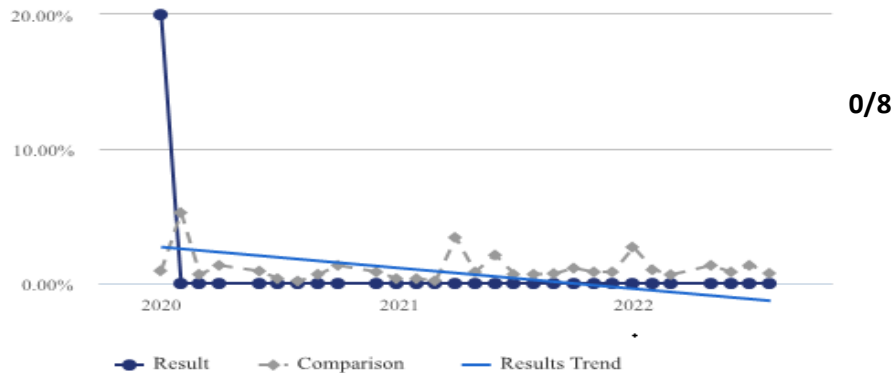
Mortality Rate (with Exclusions) - System-All Physicians

BHN

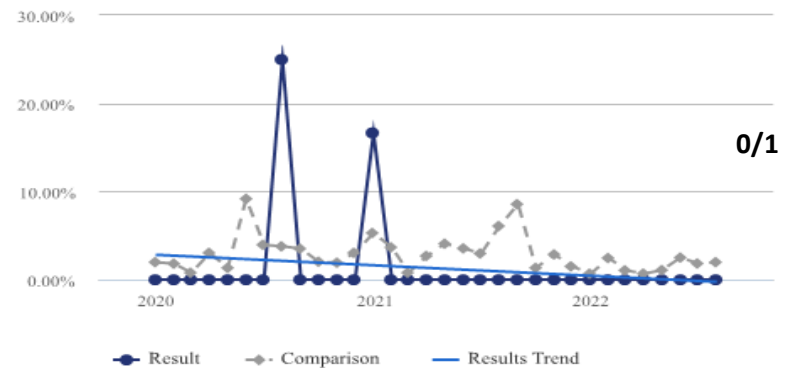


Mortality Rate (with Exclusions) - System-All Physicians

BHIP



BHCS Mortality Rate (with Exclusions) - System-All Physicians

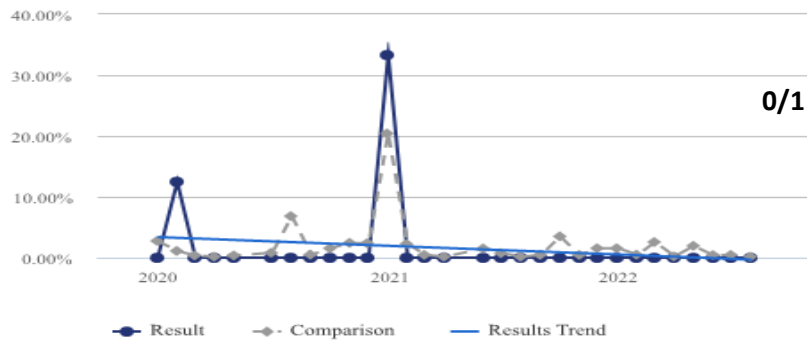


COPD Medicare Mortalities 4th Q22

Hospital Compare CMS benchmark 8.1%

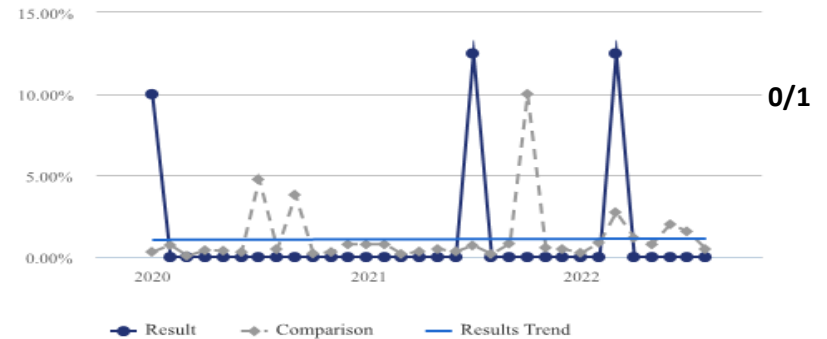
Mortality Rate (with Exclusions) - System-All Physicians

BHMC



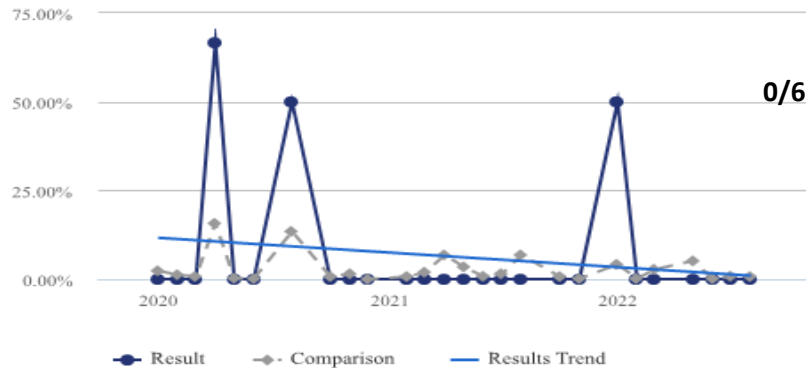
Mortality Rate (with Exclusions) - System-All Physicians

BHN



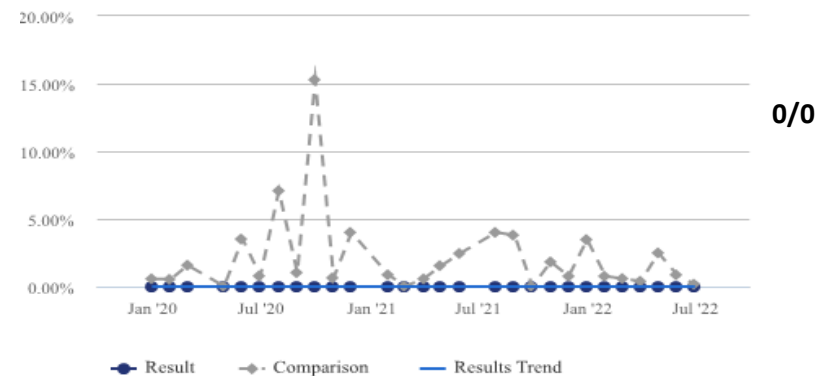
Mortality Rate (with Exclusions) - System-All Physicians

BHIP



Mortality Rate (with Exclusions) - System-All Physicians

BHCS

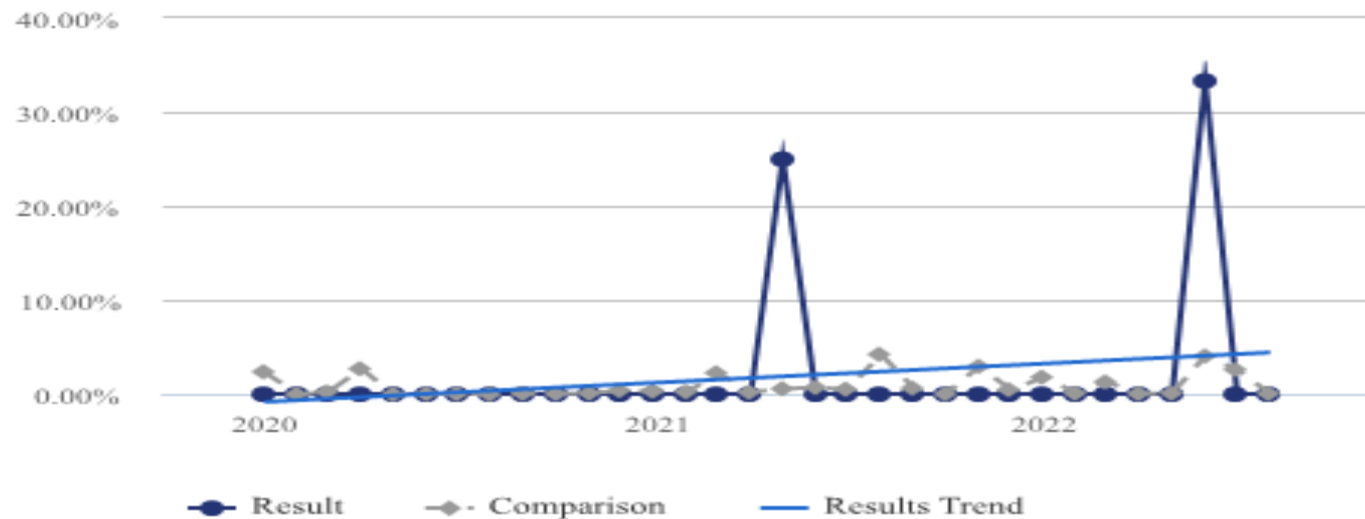


CABG Medicare Mortalities 4th Q22

Hospital Compare CMS benchmark 3.3%

BHMC

Mortality Rate (with Exclusions) - System-All Physicians



0/7